

## **Cowichan Chinook Critical Habitat Project**

The project is a component of a larger Cowichan Watershed and Health Initiative. Cowichan Tribes, in partnership with Fisheries and Oceans Canada, and with partial funding from the Habitat Stewardship program is undertaking a project that proposes Chinook as a key watershed health indicator. The project outlines key pressure and state indicators of watershed health, assesses critical habitat and the current status of Cowichan Chinook, identifies key risks to Chinook production and proposes an action plan to address or minimize the risks and increase the abundance of Chinook in the watershed.

This component of the overall project is focused on identifying critical habitat for Chinook in the Cowichan and Koksilah Rivers. The project is phased over 2 years with the initial phase including a literature review to build a digital habitat map and an expert workshop to gather habitat knowledge.

## Cowichan Chinook Critical Habitat Project 2017 – Google Earth files

One of the outcomes of the Cowichan Chinook Critical Habitat Project is a KMZ file (**Chinook in the Cowichan and Koksilah Rivers-27April2017.kmz**) with several layers for use in Google Earth as listed in the table below.

| Name of layer                        | Description  |
|--------------------------------------|--|
| Chinook Habitat                      | <p>There are several layers within this layer.</p> <p><b>Juvenile habitat – Lower Cowichan</b> - BCCF 2015-2017</p> <p><b>Holding Pools</b> as identified in the workshop in 2013 and 2017,</p> <p><b>Spawning Locations</b> – multiple sources</p>  |
| River Features and kilometer markers | <p>There are several layers within this layer</p> <p><b>River Features</b> - Waterbody and stream reach names compiled by Jason J Smith of LGL Ltd. Including landmarks from the Haig Brown map.</p> <p><b>Side Channel – Inlets</b> – locations of side channel inlets compiled by Jason J Smith of LGL Ltd.</p> <p><b>Side Channel – Outlets</b> - locations of side channel outlets compiled by Jason J Smith of LGL Ltd.</p> <p><b>Landmarks</b> – Land based features along the river</p> <p><b>River Kilometres</b> - on the Cowichan River provided by BCCF</p> <p><b>Cowichan Tribes Reserve Land</b></p> <p><b>Provincial Parks</b> – on the Cowichan and Koksilah Rivers</p> <p><b>Sediment Point Sources 2008</b> – from the report Assessment and Prioritization of Sediment Point Sources Along Cowichan River Mainstem, With Emphasis Upstream of Skutz Falls`</p> |
| Riparian Condition 2005              | <p>Data from Cowichan River Riparian Mapping`` by Madrone for LGL Ltd for Cowichan Tribes Treaty Department in 2005. Riparian condition is classed as good, fair or poor</p>   |
| Meso-Habitat of the Cowichan River   | <p>Meso-Habitat Segments as identified in "Habitat-Flow Assessment for the Middle and Upper Cowichan River" 2015 and "Habitat-Flow Assessment for the Lower Cowichan River" 2014</p> <p>Prepared for the Ministry of Forests, Lands and Natural</p>  |

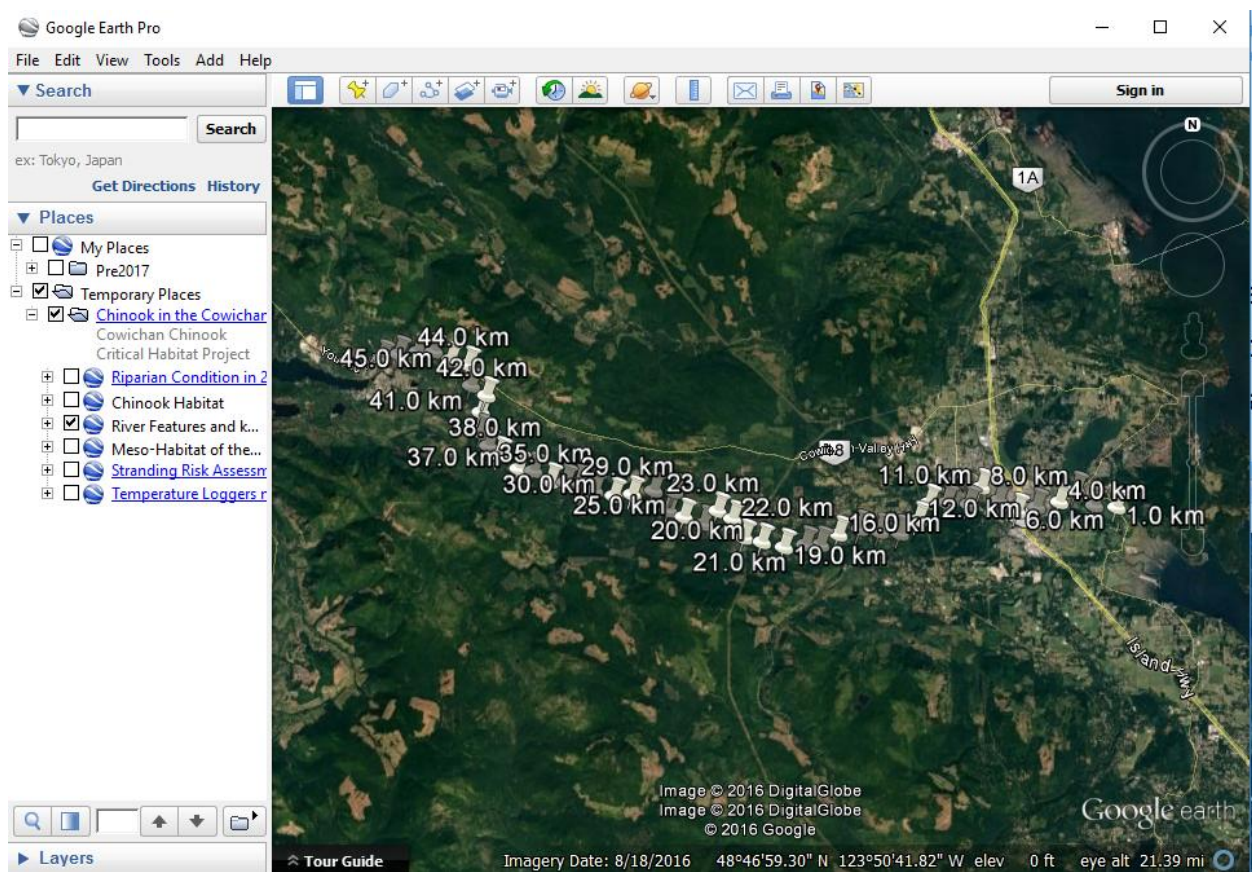
|                                       |   |
|---------------------------------------|---|
|                                       | Resources Prepared by LGL Limited   |
| Temperature Loggers monitored in 2014 | Location of temperature loggers installed and monitored by BCCF between Cowichan Lake downstream to near the river's tidal boundary |

## How to open a Google Earth file

With Google Earth installed on your computer

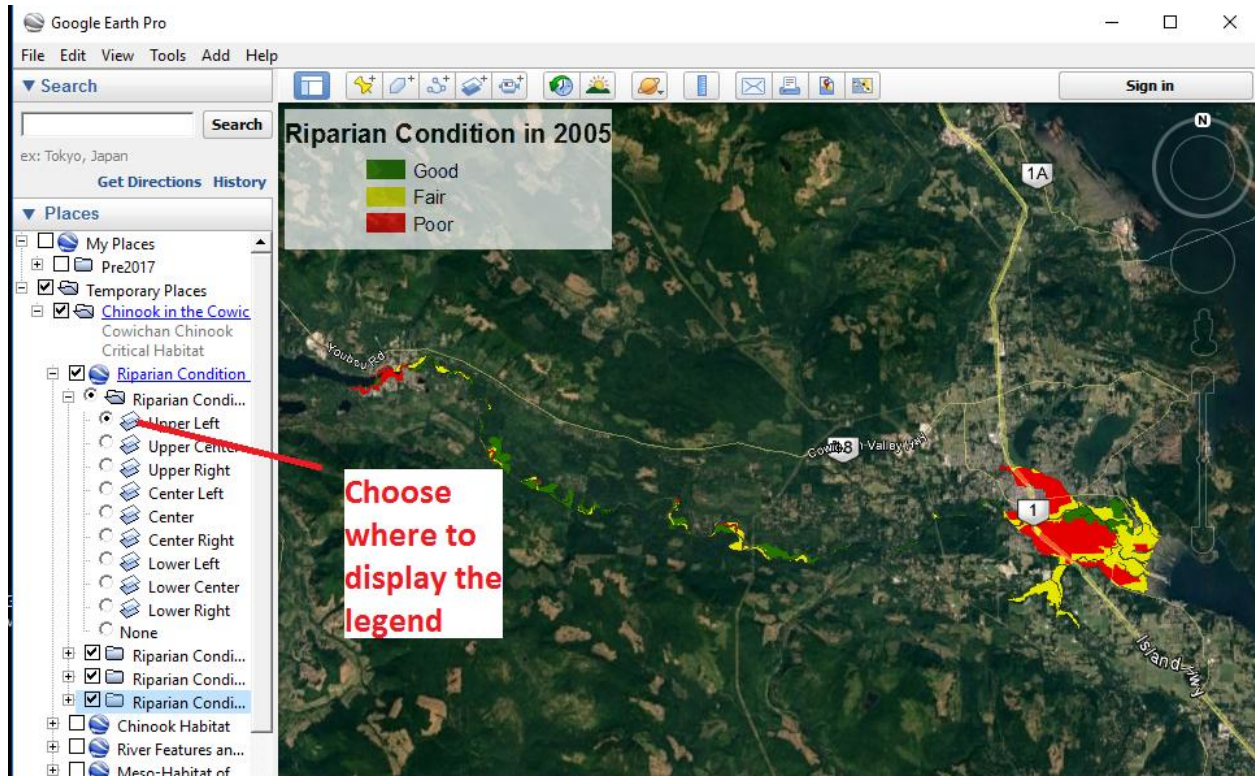
- double click on the KMZ file or
- if Google Earth is already open click File => Open => navigate to the kmz file or
- drag and drop the kmz file into Google Earth.

When you first open **Chinook in the Cowichan and Koksilah Rivers-27April2017.kmz** it will be loaded into Temporary Places. Your screen should look similar to the image below.



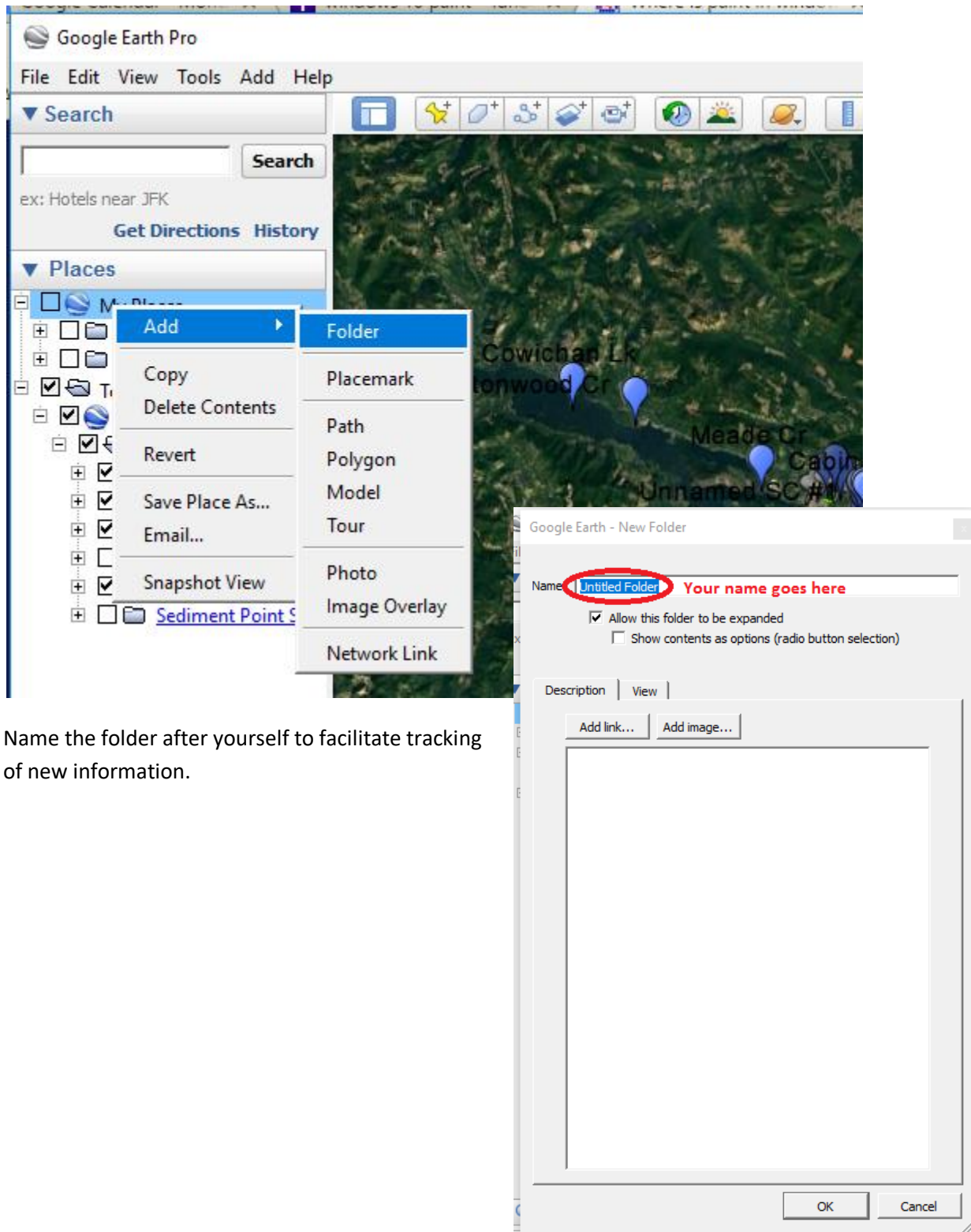
## Positioning a Legend

Several layers such as Riparian Condition have a legend. Click on the radio button beside your preferred location to display the legend as in the image below.



## To add data

Create a new folder by right-clicking on My Places =>Add => Folder.



Name the folder after yourself to facilitate tracking of new information.



Add a placemark (1), or a polygon (2) or a path (3)



## ***Share your results***

When you have finished entering sites you can share your work with others.

Right click on the folder where you have been adding sites. Select **e-mail** and follow the prompts to send your KMZ file.

